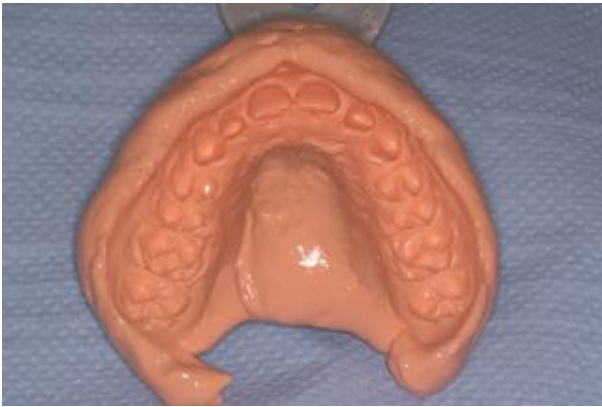


Impressions

If using alginate choose a high quality material, e.g. Xantalgin. Use well supported impression trays, metal Rimlock are ideal, or order special trays. Alternatively use silicone putty wash ideally in a metal tray.

The following anatomical areas are particularly important:

- Occlusal surfaces of all teeth, no bubbles, no blemishes, no defects



- Full recording of the terminal molars – place impression material here before seating the impression.



- The labial sulcus to accommodate the Somnowell labial connecting bar.



- The hard palate especially if a skeletal framework is required.



Alginate impressions should ideally be cast within 24 hours using a very hard stone e.g. Crystacal and vacuum mixed.

Ensure that the impression is fully set before removal from the mouth. The impression must be fully supported.

If you use alginate impression material please use a well supported impression tray e.g. Rim-Lock, or a disposable impression tray with a fixative.

SOMNOWELL